



WOB-L™



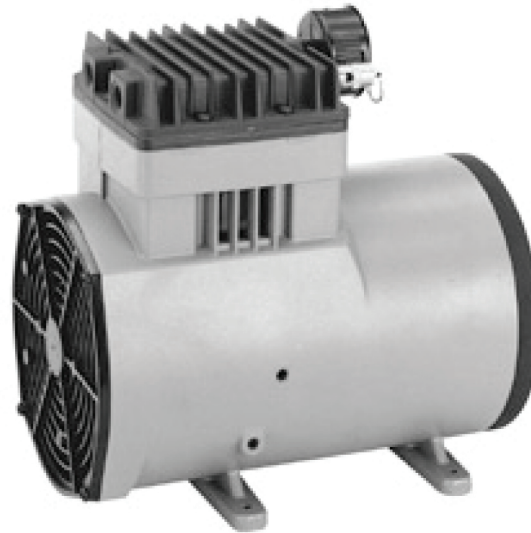
# 1207 SERIES

## MODELS

**Standard models**  
**1207PK80**

*Other models based  
on availability and  
minimum purchase.*

1207CK80



## FEATURES

- Oil-less, non-lube piston and cylinder
- Permanently lubricated bearings
- Stainless steel valves
- Aluminum valve plates
- Lightweight die cast aluminum components
- Long-life, high performance Teflon®-PTFE compound piston seal
- Thin wall, hard-coated aluminum cylinder for maximum heat transfer
- Air-over-motor for maximum cooling of motor, bearings and cylinder head
- Low noise design
- Balanced for smooth, low vibration operation
- Six foot cord and plug
- Field service capability
- All wetted aluminum parts treated for corrosion protection from moisture
- All other wetted parts stainless steel
- 115 volt, UL recognized motor and thermal protector
- Pressure restart capability (1207PK80 Only)
- Relief valve
- Intake filter

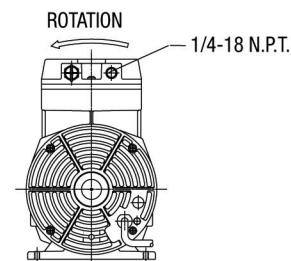
ISO 9001  
CERTIFIED

Consult factory for custom applications

# 1207 Series Performance Data

## 1207CK80

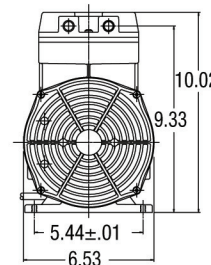
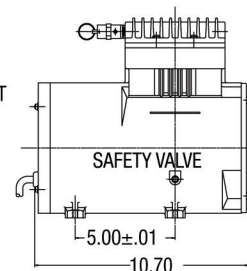
		STANDARD			
MODEL NUMBER		1207CK80		1207PK80	
<b>HEAD CONFIGURATION</b>		Pressure/Vacuum		Pressure/Vacuum	
<b>STROKE</b>		.800 Inches		.800 Inches	
<b>PRESSURE</b>		Flow @ 115v		Flow @ 115v	
CFM @ PSI	LPM @ bar				
PSI	bar	CFM	LPM	CFM	LPM
0	0	4.29	121.5	3.78	107.0
5	.5	4.17	116.5	3.72	104.6
10	.5	4.05	111.4	3.66	100.8
15	1.0	3.92	106.5	3.55	96.2
20	1.5	3.78	104.3	3.43	92.3
25	2.0	3.73	96.0	3.34	84.6
30	3.0	3.67	80.6	3.24	69.4
35	5.0	3.56	66.9	3.14	55.6
40	7.0	3.44		3.04	
50		3.30		2.89	
60		3.09		2.69	
70		2.90		2.49	
80		2.69		2.33	
90		2.52		2.14	
100		2.38		1.99	
110		2.26		1.82	
120		2.10		1.62	
<b>MAX. CONTINUOUS PRESSURE</b>		125 PSI	8.6 bar	125 PSI	8.6 bar
<b>MAX. INTERMITTENT PRESSURE</b>		125 PSI	8.6 bar	125 PSI	8.6 bar
<b>VACUUM</b>		Flow @ 115v		Flow @ 115v	
CFM @ IN. hg	LPM @ mbar (gauge)				
IN. hg	mbar (gauge)	CFM	LPM	CFM	LPM
0	0	4.29	121.5	3.78	107.0
5	-100	2.94	98.9	2.60	87.3
10	-200	2.30	80.0	1.98	70.4
15	-400	1.64	58.4	1.30	49.1
20	-600	.99	36.4	.70	27.6
25	-800	.34	14.7	.10	7.5
<b>MAX. VACUUM</b>		28.0" hg	-949 mbar	25.9" hg	-878 mbar
<b>MAX. AMBIENT AIR TEMP.</b>		104° F	40°C	104° F	40°C
<b>MIN. AMBIENT START TEMP.</b>		50° F	10°C	50° F	10°C
<b>MAX. RESTART PRESSURE</b>		0 PSI	0 bar	120 PSI	8.3 bar
<b>MAX. RESTART VACUUM</b>		0"hg	0 mbar	0"hg	0 mbar
<b>MOTOR VOLTAGE/FREQUENCY</b>		115/60/1		115/60/1	
<b>MOTOR TYPE</b>		Capacitor Start		Capacitor Start	
<b>CURRENT AT RATED LOAD (AMPS)</b>		11.5		10.6	
<b>POWER AT RATED LOAD (WATTS)</b>		905		800	
<b>STARTING CURRENT (LOCKED ROTOR, AMPS)</b>		38.5		38.5	
<b>CAPACITOR VALUE</b>		189/227 mfd		189/227 mfd	
<b>MIN. FULL LOAD SPEED (RPM)</b>		1700		1700	
<b>THERMAL PROTECTOR</b>		Yes		Yes	
<b>NET WEIGHT</b>		26 lbs.	11.8 kg	26 lbs.	11.8 kg



4X 1/4-20 UNC-2B

AIR FLOW DIRECTION

NO OPEN PORT (AS CAST)



The information presented in this material is based on technical data and test results of nominal units. It is believed to be accurate and reliable and is offered as an aid to help in the selection of Thomas products. It is the responsibility of the user to determine the suitability of the product for his intended use and the user assumes all risk and liability whatsoever in connection therewith. Thomas Industries does not warrant, guarantee or assume any obligation or liability in connection with this information.

**NOTE:** Models pictured are representative of the series and do not represent a specific model number. Consult factory for detailed physical description.